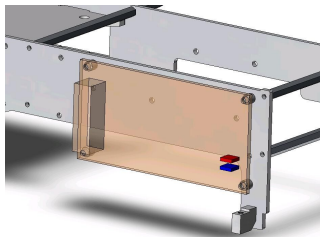


EF28 – external fanless power supply

mCubed...

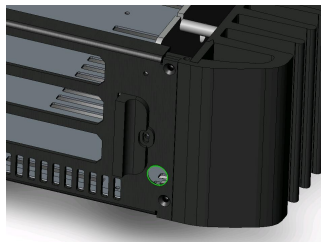
Package contents:

AC/DC power supply, DC/DC board, AC connector cable, DC high-end cable, mounting material



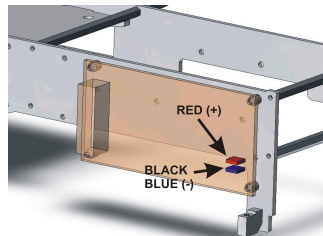
Step 1:

Mount the DC/DC with the bolts from the accessories bag or directly to the acrylic cage of the HFX mini



Step 2:

Thread the high-end power DC cable through the opening on the back side of the HFX mini (use the rubber tube) and secure it from the inside of the case with the cable tie.



Step 3:

Connect your devices to the DC/DC board. Plug the high-end DC cable to the DC/DC board. Use the same power outlet for all connected devices to avoid different ground potentials.

DISCLAIMER:

For the installation of the EF28 you have to open the PC. If you are not familiar with installing PC-components, please get in contact with a Professional nearby. mCubed is not liable for any damage to your system due to the installation, any shortcut or even loss of data and for any other loss or damage (including indirect or consequential loss, financial loss, loss of profits or loss of use). For all other liabilities not referred to elsewhere in these Terms our liability is limited in damages to the price of the goods. Full terms and conditions can be downloaded from www.mcubed-tech.com/T&C.pdf.

IMPORTANT!

**Plug the RED wire (+) to the top
Plug the BLUE or BLACK (-) wire to
the bottom terminal**