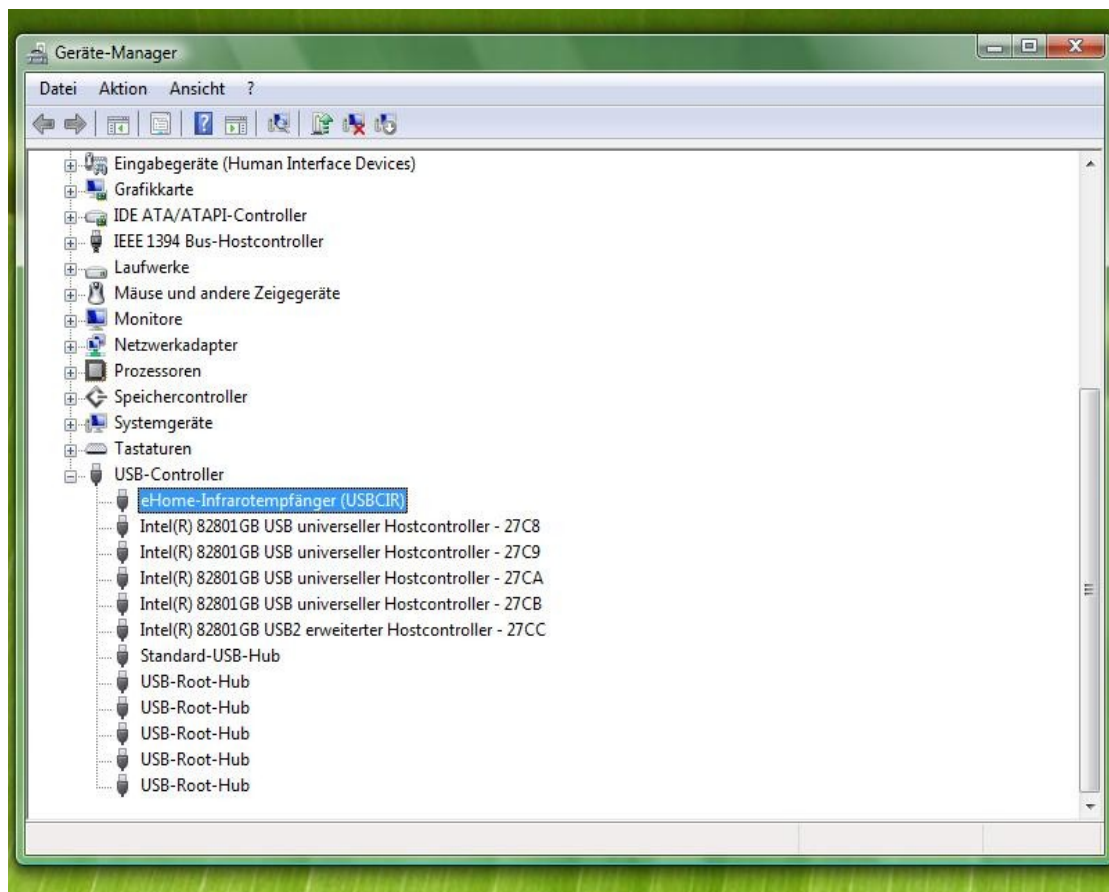


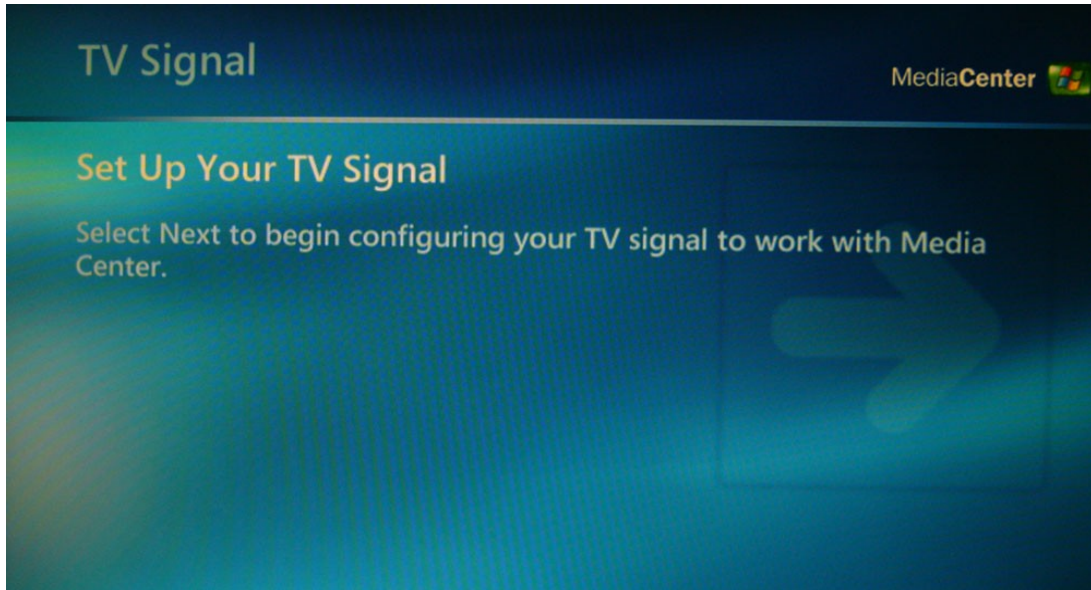
# VISTA IR

## Software Installation

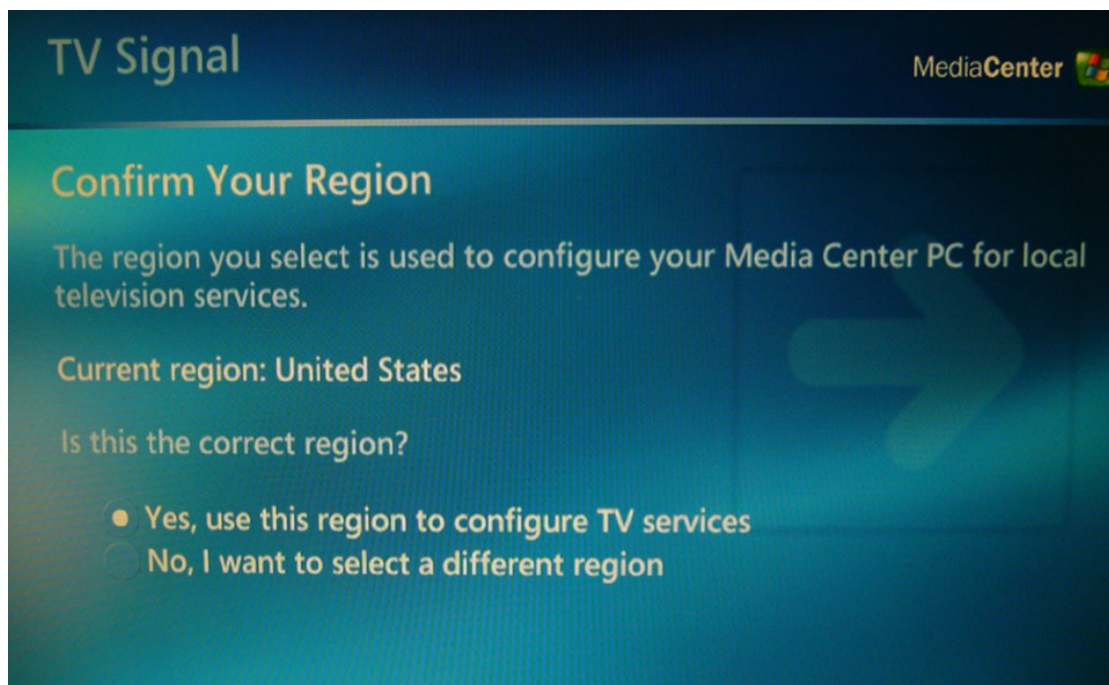
1) The VISTA IR will be recognized and installed automatically under Windows VISTA. Please check the device manager. You should have the USB device „eHome IR receiver“.



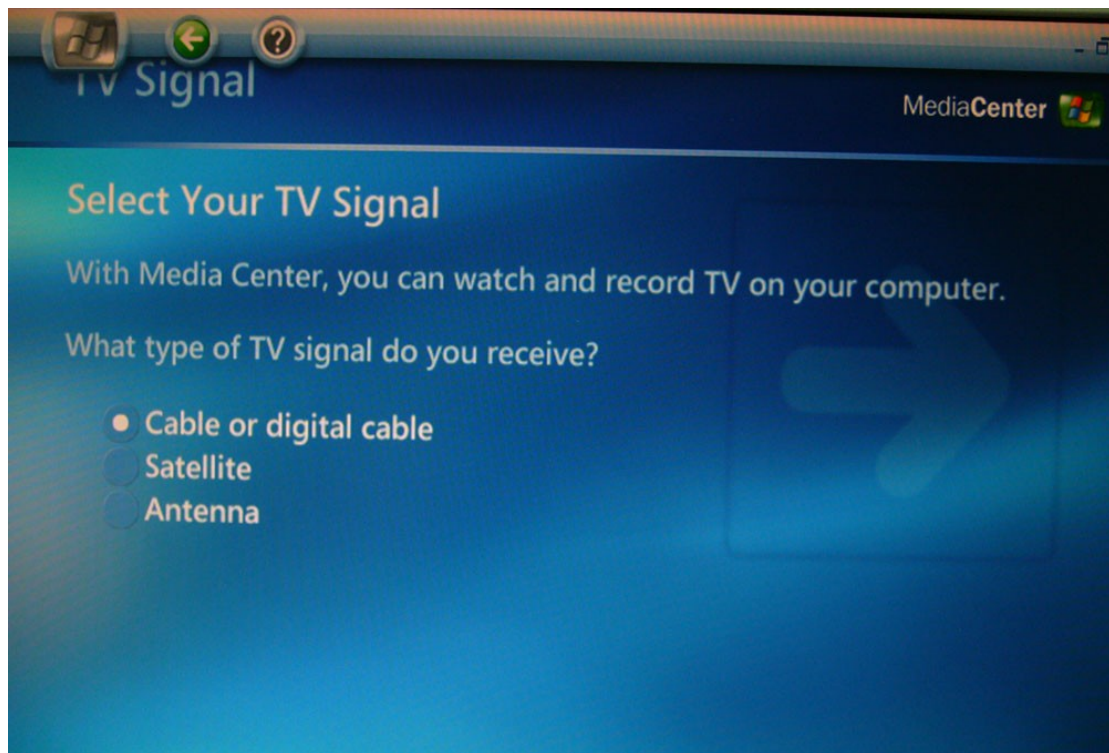
2) If you want to use the **IR-Blaster**, then you have to configure a Set-Top-Box within VISTA MCE. Open and enter Windows XP MCE application, Click and enter Settings, Click and enter TV, Click and enter Set Up TV Signal, Click Next.



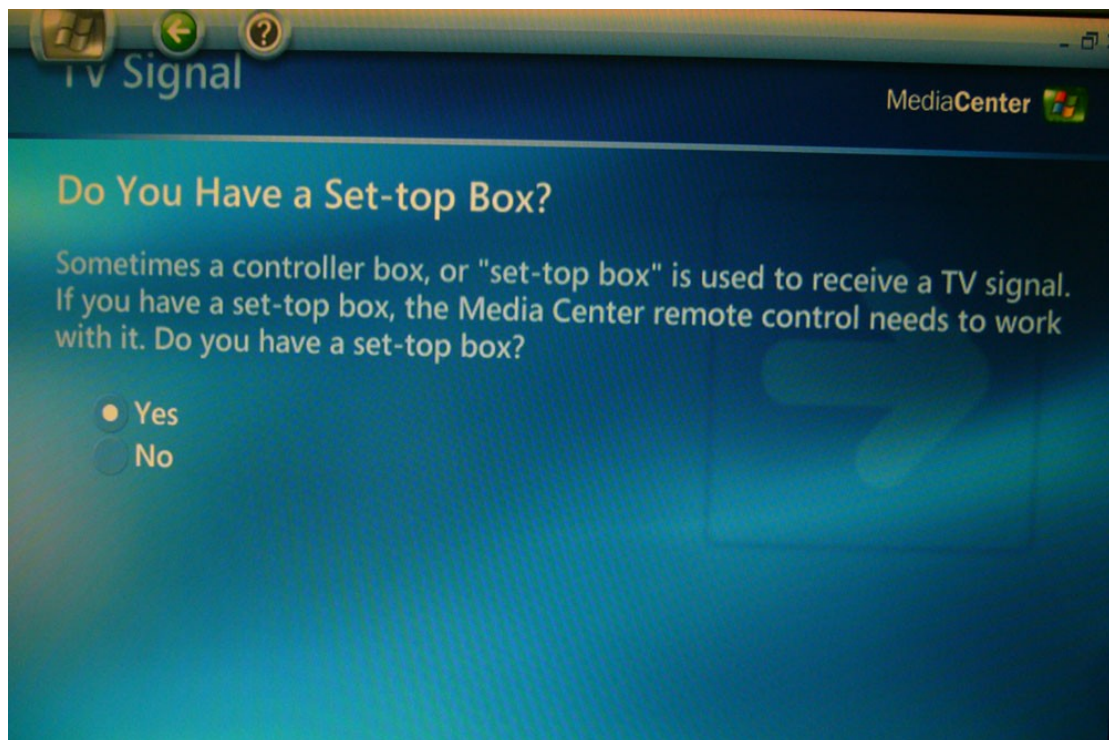
3) Check if your current region is correct or not. If correct, please click Yes, use this region to configure TV series, and then click Next. If incorrect, please click No, I want to select a different region, and then click Next and jump to another screen to choose your region.



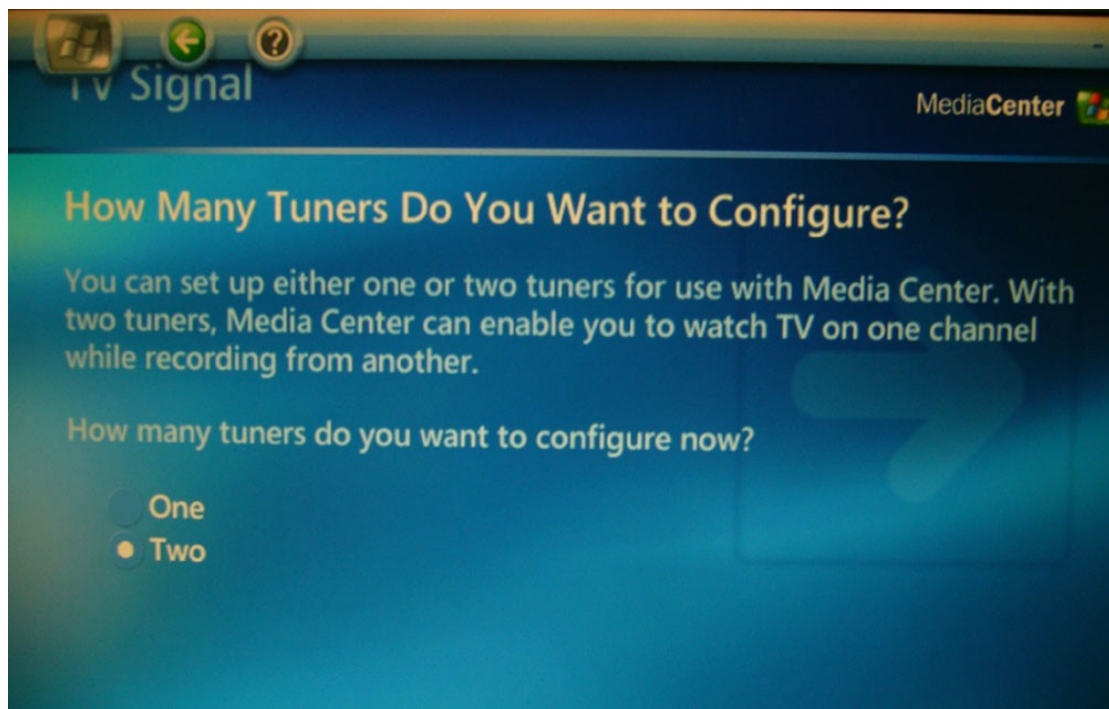
4) Please select your TV signal which from cable or digital cable.



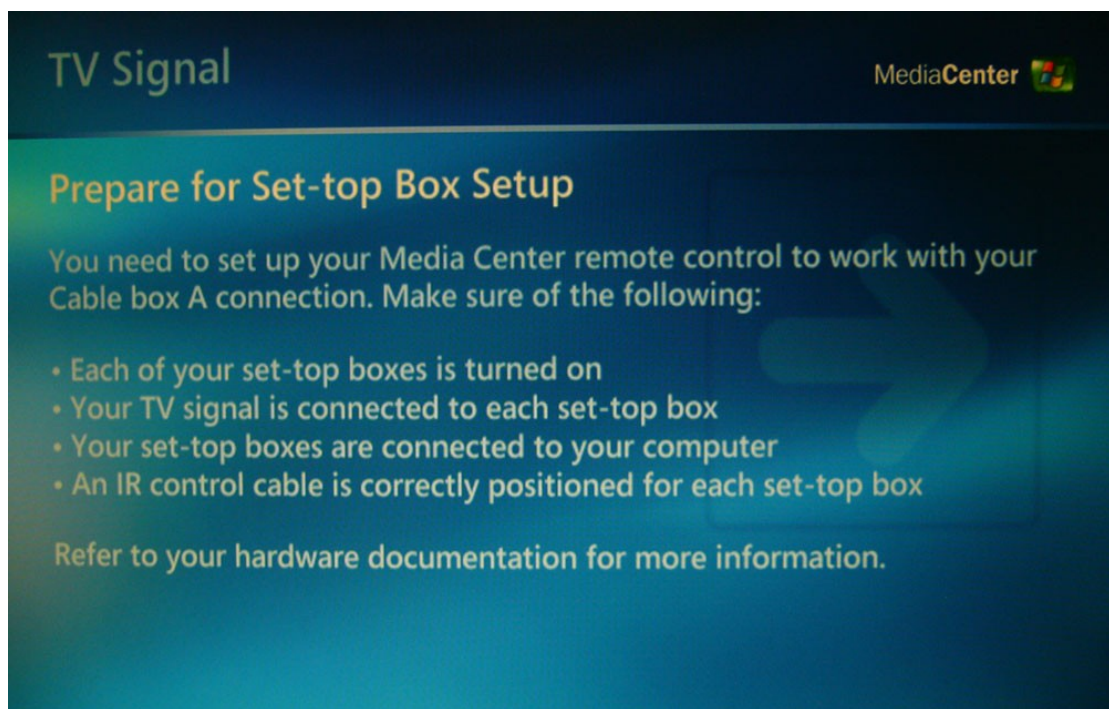
5) If you have a set-top box, please select yes and then click next.



6) Please select the "Two".



7) Please click the "Next".



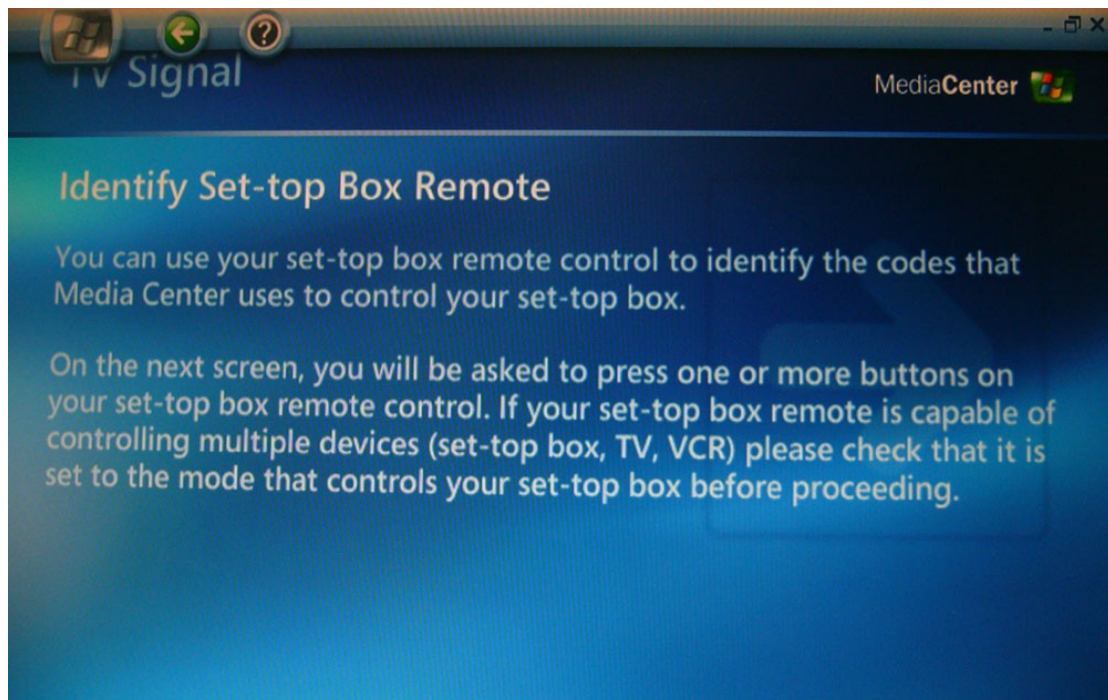
8) Please select a working TV signal. (S-Video)



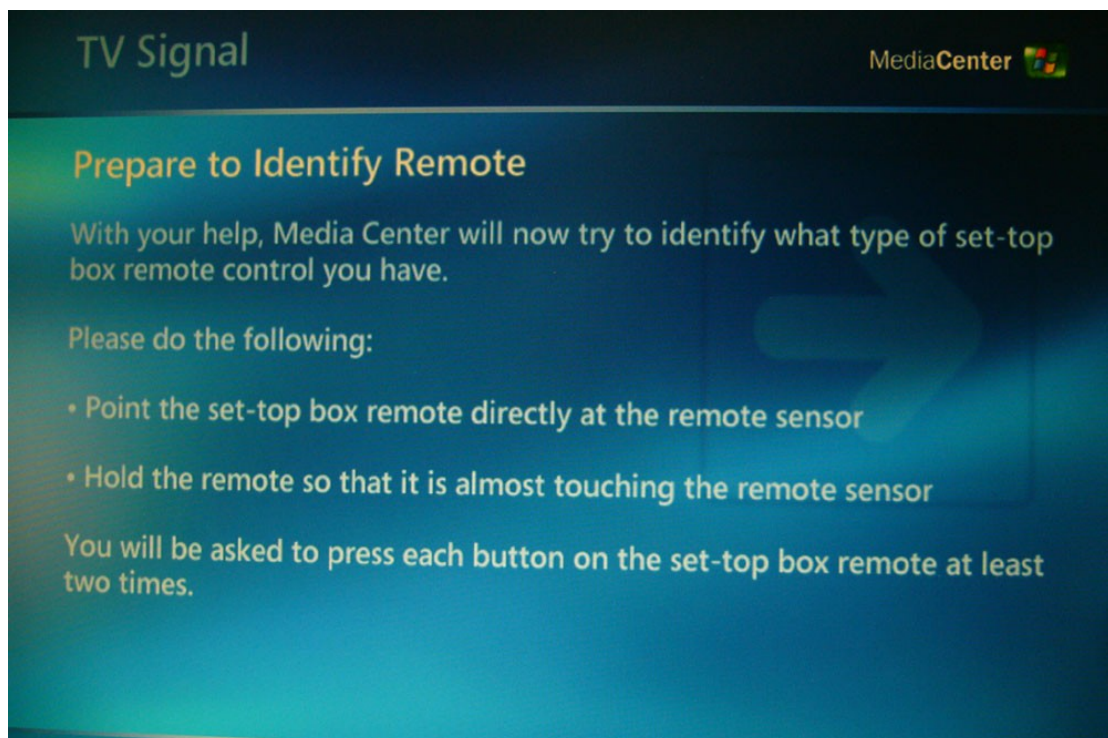
9) Please select yes if you have a remote for your set-top box.

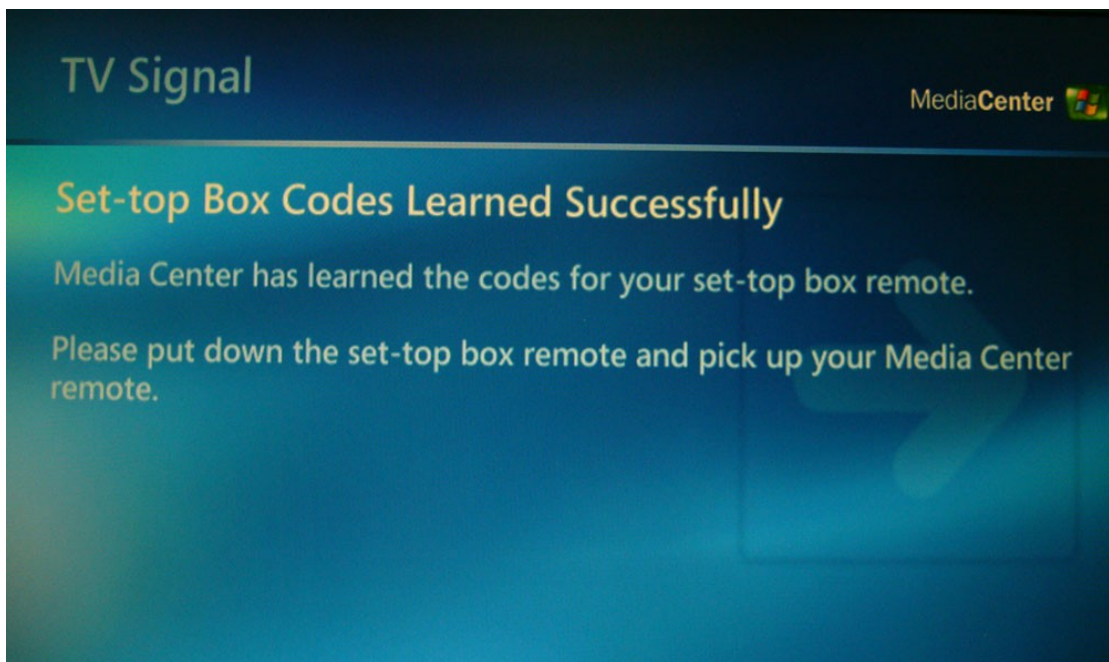
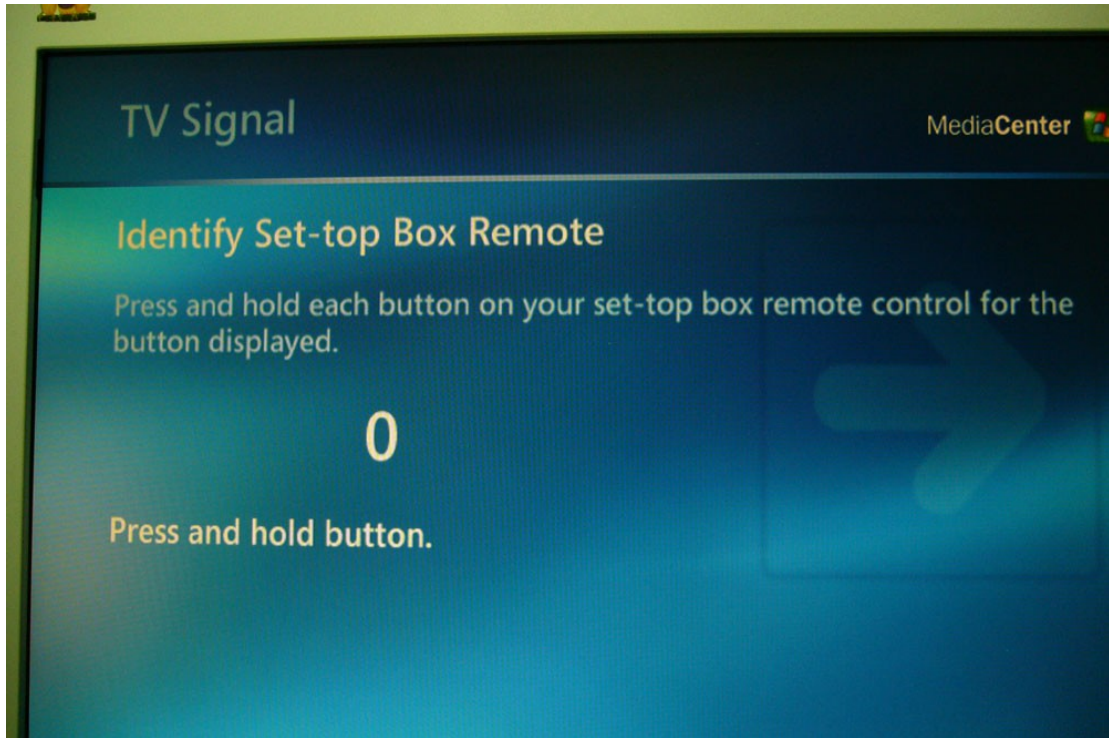


10) Please click the "Next". You can use MCE remote control to learn the IR remote control of set-top box.



11) Press and hold each button on your set-top box remote control for the button displayed. Then your MCE remote control can control the set-top box.





12) Please press the number buttons to test the MCE remote control to enter a channel.

TV Signal

MediaCenter

### Test Channel Changing

Use the number buttons on the Media Center remote control to enter a channel that you know you are able to receive through your set-top box.

Try next IR control cable

The set top box changed the channel correctly

The set top box did not change the channel correctly